



KINTEK SOLUTION

Electrolytic Cell Catalog

Contact us for more catalogs of [Sample Preparation](#), [Thermal Equipment](#), [Lab Consumables & Materials](#), [Bio-Chem Equipment](#), etc...

KINTEK SOLUTION

COMPANY PROFILE

>>> About Us

Kintek Solution Ltd is one technology orientated organization, team members are devoted to probing the most efficient and reliable technology and innovations in the scientific researching equipment, fields like biochemical reacting, new materials researching, heat treatment, vacuum creating, refrigerating, as well as pharmaceutical and petroleum extracting equipment.

In the past 20 years, we earned rich experiences in this researching equipment field, we are capable to supply both the equipment and solution according to customer's needs and realities, we have also developed lots of customer tailored equipment according to a specific working purpose, and we have lots of successful projects in many universities and institutes from different countries, like Asia, Europe, North and South America, Australia and New Zealand, Middle East, and Africa.

Profession, quick response, hard working, and sincerity is a remarkable label of our team members working attitude, which earn us a sound reputation among our clients.

We are here and ready to service our clients from different countries and regions, and share the most efficient and reliable technology together!



Electrolytic Cell With Five-Port

Item Number: ELC



Introduction

Streamline your laboratory consumables with Kintek's Electrolytic Cell with five-port design. Choose from sealed and non-sealed options with customizable electrodes. Order now.

[Learn More](#)

Specification	10ml~1000ml
Applicable temperature range	0~60°C
Sealed form	Thread / Apron
Material	Boron glass, PTFE
Openings in the electrolytic cell	Three electrode holes (6mm) and Two air holes (3mm), can be customized
Specification	10ml~1000ml
Applicable temperature range	0~60°C
Material	Boron glass, PTFE
Openings in the electrolytic cell	Three electrode holes (6mm), can be customized

H Type Electrolytic Cell - H Type / Triple

Item Number: ELCH



Introduction

Experience versatile electrochemical performance with our H-type Electrolytic Cell. Choose from membrane or non-membrane sealing, 2-3 hybrid configurations. Learn more now.

[Learn More](#)

Specification	30ml~ 500ml
Applicable temperature range	0 ~ 60°C
Applicable membrane area	15mm (can be customized)
Material	Boron glass + PTFE
Electrolytic cell punching	Three electrode holes (6mm) Four gas (3mm) can be customized opening

Specification	30ml~ 500ml
Applicable temperature range	0 ~ 60°C
Applicable membrane area	0.5cm ² /1cm ²
Material	Boron glass + PTFE
Electrolytic cell punching	Three electrode holes (6mm) Six air holes (3mm) can be customized

Ptfe Electrolytic Cell Corrosion-Resistant Sealed / Non-Sealed

Item Number: ELCP



Introduction

Choose our PTFE Electrolytic Cell for reliable, corrosion-resistant performance. Customize specifications with optional sealing. Explore now.

[Learn More](#)

Specification	10ml ~ 1000ml
Applicable temperature range	0 ~ 60°C
Sealed form	thread + apron
Material	PTFE
Electrolytic cell punching	Three electrode holes (6mm), two air holes (3mm), custom openings are available
Specification	10ml ~ 1000ml
Applicable temperature range	0 ~ 60°C
Material	PTFE
Electrolytic cell punching	Three electrode holes (6mm), custom openings are available

Multifunctional Electrolytic Cell Water Bath Single Layer / Double Layer

Item Number: ELCM



Introduction

Discover our high-quality Multifunctional Electrolytic Cell Water Baths. Choose from single or double-layer options with superior corrosion resistance. Available in 30ml to 1000ml sizes.

[Learn More](#)

Specification	30ml ~ 1000ml
Applicable temperature range	0 ~ 60°C
Material	Glass + PTFE
Working conductive sheet material	Copper / Titanium

Water Bath Electrolytic Cell - Double Layer Five-Port

Item Number: ELCW



Introduction

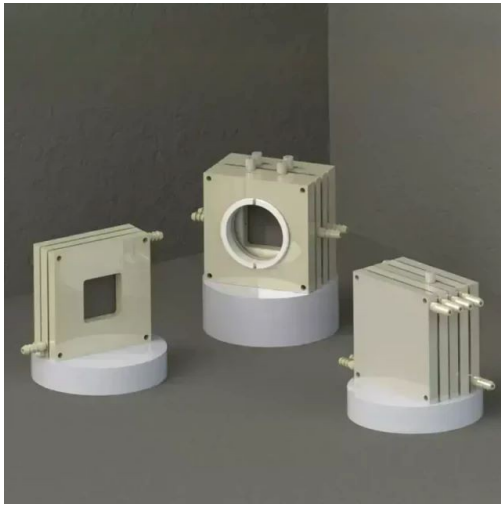
Experience optimal performance with our Water Bath Electrolytic Cell. Our double-layer, five-port design boasts corrosion resistance and longevity. Customizable to fit your specific needs. View specs now.

[Learn More](#)

Specification	50ml ~ 500ml
Applicable temperature range	0 ~ 60°C
Sealed form	Thread + Apron
Material	Boron glass + PTFE
Electrolytic cell hole	Three electrode holes (6mm), two air holes (3mm), custom openings are available

Gas Diffusion Electrolysis Cell Liquid Flow Reaction Cell

Item Number: ELCG



Introduction

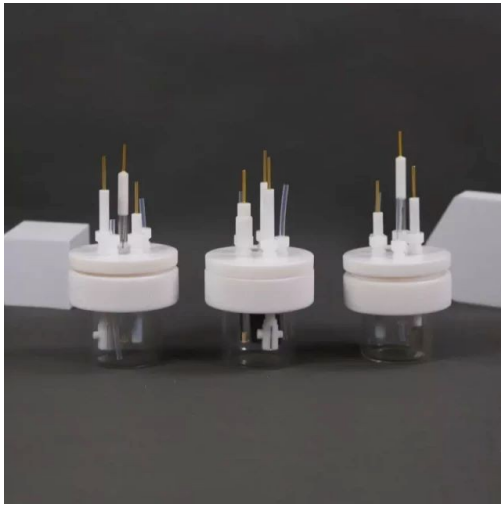
Looking for a high-quality gas diffusion electrolysis cell? Our liquid flow reaction cell boasts exceptional corrosion resistance and complete specifications, with customizable options available to suit your needs. Contact us today!

[Learn More](#)

Airway type	snake-shaped airway / back-shaped airway / special-shaped custom
Cell material	optional PTFE / PEEK / PP / plexiglass / nylon

Super Sealed Electrolytic Cell

Item Number: ELCS



Introduction

Super-sealed electrolytic cell offers enhanced sealing capabilities, making it ideal for experiments that require high airtightness.

[Learn More](#)

Specification	30ml ~ 1000ml
Applicable temperature range	0 ~ 60°C
Sealed form	Thread + Apron
Material	Boron glass + PTFE
Electrolytic cell hole	Three electrode holes (6mm), two air holes (3mm), custom openings are available

Water Bath Electrolytic Cell - H-Type Double-Layer Optical

Item Number: ELCHD



Introduction

Double-layer H-type optical water bath electrolytic cells, with excellent corrosion resistance and a wide range of specifications available. Customization options are also available.

[Learn More](#)

Specification	10ml ~ 1000ml
Applicable temperature range	0 ~ 60°C
Sealed form	Thread + Apron
Material	Boron glass + PTFE
Electrolytic cell hole	Three electrode holes (6mm), two air holes (3mm), custom openings are available

Double-Layer Water Bath Electrolytic Cell

Item Number: ELCWD



Introduction

Discover the temperature-controllable electrolytic cell with a double-layer water bath, corrosion resistance, and customization options. Complete specifications included.

[Learn More](#)

Specification	50ml ~ 250ml
Applicable temperature range	0 ~ 60°C
Sealed form	Thread + Apron
Material	Boron glass + PTFE
Electrolytic cell hole	Three electrode holes (6mm), two air holes (3mm), custom openings are available
Specification	50ml ~ 500ml
Applicable temperature range	0 ~ 60°C
Material	Boron glass + PTFE
Electrolytic cell hole	Three electrode holes (6mm), custom openings are available

Rotating Disk Electrode / Rotating Ring Disk Electrode (Rrde)

Item Number: ELER



Introduction

Elevate your electrochemical research with our Rotating Disk and Ring Electrodes. Corrosion resistant and customizable to your specific needs, with complete specifications.

[Learn More](#)

Specifications	5mm gold/platinum/glassy carbon
Applicable temperature range	10 ~ 25°C
Purity	99.99%
Guide material	glassy carbon + platinum ring
Disk electrode material	glassy carbon/gold/platinum/graphite/zinc/nickel copper/iron, etc.
Jacket material	polytetrafluoroethylene (PTFE) / polysulfone (PEEK)
Collection rate	37%
Disk area	0.2475 cm ²
Ring area	0.1866 cm ²
Platinum ring outer diameter	7.92 mm
Platinum ring inner diameter	6.25 mm

Optical Water Bath Electrolytic Cell

Item Number: ELCWO



Introduction

Upgrade your electrolytic experiments with our Optical Water Bath. With controllable temperature and excellent corrosion resistance, it's customizable for your specific needs. Discover our complete specifications today.

[Learn More](#)

Specifications	50ml ~ 250ml
Applicable temperature range	0 ~ 60°C
Sealing form	Thread + Apron
Material	boron glass + PTFE
Electrolytic cell opening	three electrode holes (6mm), two air holes (3mm), can be customized
Specifications	50ml ~ 250ml
Applicable temperature range	0 ~ 60°C
Material	boron glass + PTFE
Electrolytic cell opening	three electrode holes (6mm), can be customized

Flat Corrosion Electrolytic Cell

Item Number: ELEFC



Introduction

Discover our flat corrosion electrolytic cell for electrochemical experiments. With exceptional corrosion resistance and complete specifications, our cell guarantees optimal performance. Our high-quality materials and good sealing ensure a safe and durable product, and customization options are available.

[Learn More](#)

Specifications	350ml, can be customized
Applicable temperature range	0 ~ 70°C
Sealing form	TSilicone rubber gasket
Material	boron glass + PTFE
Hole	three grinding mouths + two inner circulation pagoda mouths
Specifications	350ml, can be customized
Applicable temperature range	0 ~ 100°C
Material	boron glass + PTFE
Hole	Three grinding mouth two circulation + water bath

Quartz Electrolytic Cell

Item Number: ELEQ



Introduction

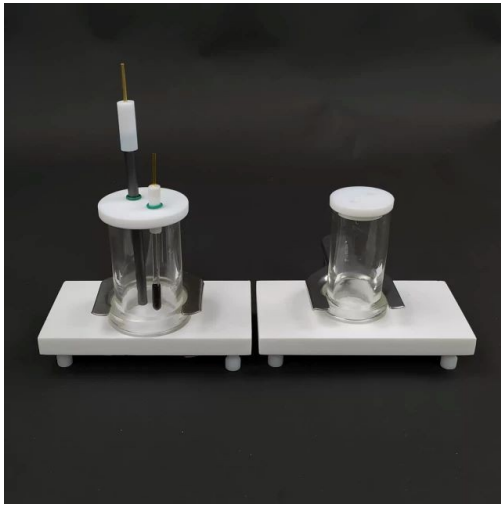
Looking for a reliable quartz electrochemical cell? Our product boasts excellent corrosion resistance and complete specifications. With high-quality materials and good sealing, it's both safe and durable. Customize to meet your needs.

[Learn More](#)

Specifications	10ml ~ 1000ml
Applicable temperature range	0 ~ 60°C
Sealing form	thread + apron
Material	Quartz glass + PTFE
Opening hole of electrolytic cell	Three electrode holes (6mm), Two air holes (3mm), can be customized
Specifications	10ml ~ 1000ml
Applicable temperature range	0 ~ 60°C
Material	Quartz glass + PTFE
Opening hole of electrolytic cell	Three electrode holes (6mm)

Coating Evaluation Electrolytic Cell

Item Number: ELEC



Introduction

Looking for corrosion-resistant coating evaluation electrolytic cells for electrochemical experiments? Our cells boast complete specifications, good sealing, high-quality materials, safety, and durability. Plus, they're easily customizable to meet your needs.

[Learn More](#)

Specifications	8/30/50/80ml
Applicable temperature range	0 ~ 60°C
Reaction area	0.5~ 2cm ²
Material	boron glass + PTFE
Opening hole of electrolytic cell	Two electrode holes (including graphite rod electrode*1 silver chloride electrode*1)

Side Window Optical Electrolytic Cell

Item Number: ELCOS



Introduction

Experience reliable and efficient electrochemical experiments with a side window optical electrolytic cell. Boasting corrosion resistance and complete specifications, this cell is customizable and built to last.

[Learn More](#)

Specifications	50ml ~ 1000ml
Applicable temperature range	0 ~ 60°C
Sealing form	thread
Material	glass + PTFE
Opening hole of electrolytic cell	Three electrode holes (6mm), two air holes (3mm), custom openings are available
Specifications	50ml ~ 1000ml
Applicable temperature range	0 ~ 60°C
Sealing form	thread
Material	PTFE
Opening hole of electrolytic cell	Three electrode holes (6mm), two air holes (3mm), custom openings are available

Thin-Layer Spectral Electrolysis Cell

Item Number: ELCST



Introduction

Discover the benefits of our thin-layer spectral electrolysis cell. Corrosion-resistant, complete specifications, and customizable for your needs.

[Learn More](#)

Specifications	water system / non-water system
Applicable temperature range	room temperature
Sealing form	non-sealed
Material	Quartz + PTFE
Opening hole of electrolytic cell	three electrode holes (including platinum wire electrode, silver chloride electrode, platinum mesh electrode)



Kintek Solution

Head Quarter: No.89 Science Avenue, High-Tech Zone,
Zhengzhou, China

Hongkong Office: 300 Lockhart Road, Wan Chai,
Hongkong

Canada Office: Boulevard Graham, Mont-Royal, QC, H3P
2C7, Canada

